



FEDERAL MINISTRY OF ENVIRONMENT
HYDROCARBON POLLUTION REMEDIATION PROJECT (HYPREP)

REPORT OF HYPREP ACTIVITIES IN THE MONTH OF APRIL 2021.

1. PHASE 1 BATCH 1 & BATCH 2 REMEDIATION PROJECT STATUS REPORT

A. PHASE 1 BATCH 1 SITES

Remediation work was actively in progress at only Lot 009 out of the five (5) outstanding Lots in Phase 1 Batch 1 Remediation Project Sites.

At Lot 009 (Saanako - Mogho, Gokana L.G.A), the Contractor has already commenced backfilling of the excavated part of the delineated impacted area upon the authority of HYPREP to do so after the requisite Monitoring {Quality Assurance / Quality Control (QAQC) processes.



Plate 1: Backfilling of excavated pit with treated soil at Lot 009 (Saanako) in Mogho, Gokana L.G.A. (Contractor: Odun Environmental Ltd).

The other four (4) outstanding Phase 1 Batch 1 Remediation Lots {Lot 011 and 012 at Debon-Bodo/Mogho, Lot 013 at Nweekol Zorbuke –K.Dere and Lot 016 (Korokoro Well 005)} are presently out of site awaiting completion of processes of Milestone payments.

Detailed information on the Status of the remaining 5 Lots in the on-going remediation works under Phase 1, Batch 1 is summarized in Table 1 below:

S/ N	LOT NR.	REMEDICATION CONTRACTOR	SITE NAME/ COMMUNITY	L.G.A.	PERFORMANCE PERCENTAGE (%)
1.	009	Odun Environmental Ltd	Saanako, Mogho	Gokana	83
2.	011	Mosvinny Nig Ltd	Debon- Bodo / Mogho	Gokana	84
3.	012	Shamsa Resources & Services Ltd	Debon. Bodo / Mogho	Gokana	89
4.	013	Centennial Devt. & Investments Ltd	Nweekol Zorbuke, K.Dere	Gokana	83
5.	016	Newline West Africa Ltd	Buemene Well 005, Korokoro	Tai	56

B. PHASE 1 BATCH 2 SITES

Setting up of site offices had been undertaken at twenty-seven (27) out of the twenty-nine (29) Phase 1, Batch 2 remediation sites {the two (2) pending Lots in this category include Lot 027 at Bara Alue, Tai L.G.A and Lot 032 at B.Dere / Gio, Gokana / Tai L.G.A)}.



**Plate 2: Setting up of Site Office at advance stage of completion at Lot 052, Okuluebu, Ogale in Eleme L.G.A.
(Remediation Contractor = Montego Upstream Services Ltd).**

Twenty-six (26) of the twenty-nine (29) lots in Batch 2 have either completed the construction of their engineered biocells or at about 90%. Only three Lots (Lot 027, 032 and 055) have not started the construction of biocells.



**Plate 3: Completed Engineered Biocell already in use at Lot 023 (B.Dere/Gio site in Gokana/Tai L.G.A).
Application of nutrient additive /remediation product with the use of pressure spraying pump and mechanical
homogenization of the soil under treatment on-going.
(Remediation Contractor = Cascade Engineering Systems Ltd).**



Plate 4: Engineered Biocell at advance stage of construction at Lot 051 at Okuluebu, Ogale in Eleme L.G.A. Completion activities include stabilization of the entrance, completion of the construction of the leacheate sump and the installation of the sharp sand conducting layer. (Remediation Contractor= Erotina Nig. Ltd).

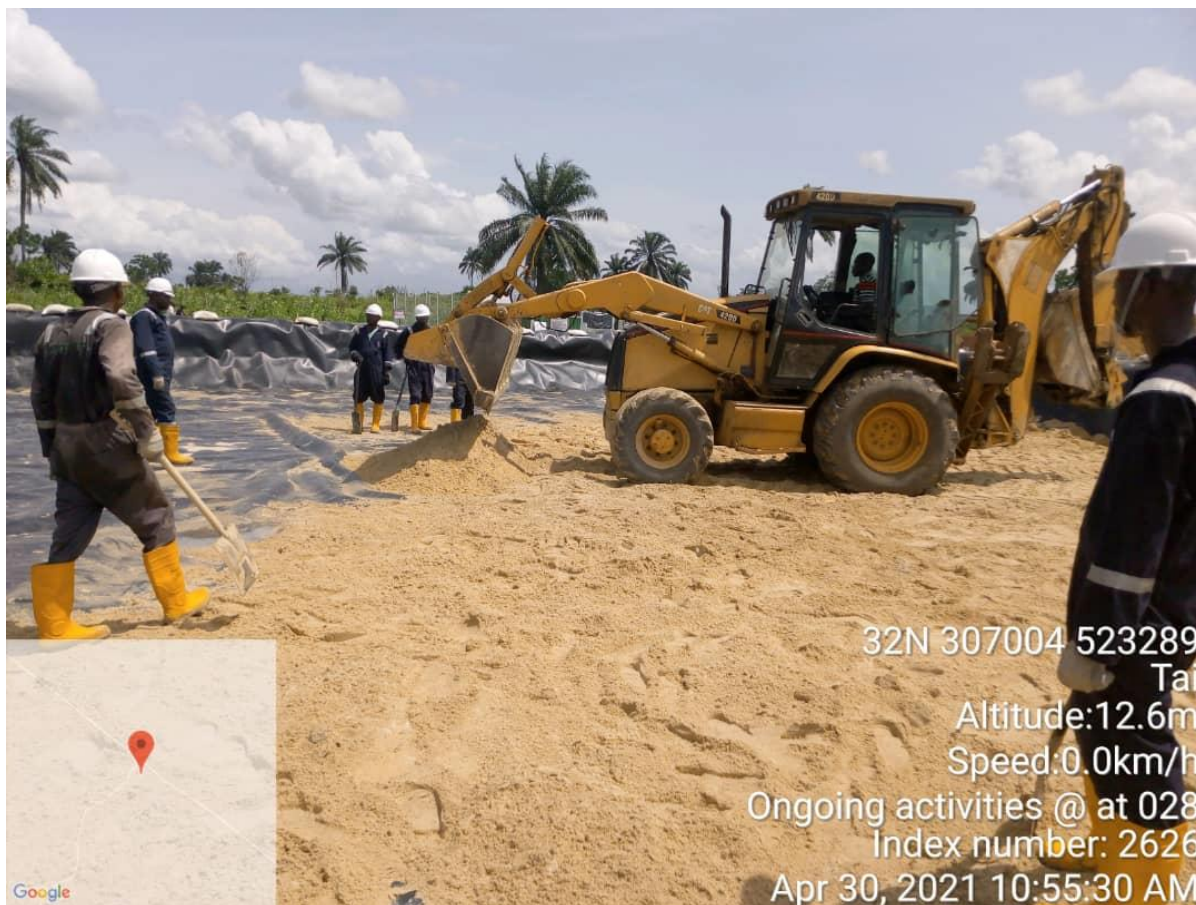


Plate 5: Engineered Biocell construction at completion stage at Lot 028 (Bara Alue, Tai L.G.A). Installation of the sharp sand conducting layer in progress. (Remediation Contractor = Emamed Nig. Ltd).

Excavation of impacted soil have been completed in two (2) of the sites in Phase 1 Batch 2 remediation works while treatment and backfilling are at various stages of progression. These are Lot 026 at B.Dere / Gio in Gokana / Tai L.G.A and Lot 043 at Aleto (Ngofa) in Eleme L.G.A. Fifteen (15) other Lots are at various stages of excavation and treatment of impacted soil while the remaining twelve (12) are expected to commence same soon (see Table 2 below) and the pictures that follow.

Table 2: Details of status of excavation works at Lots in Phase 1 Batch 2 HYPREP Remediation Works.

Status of Excavation and Treatment Works	Lot Numbers	Number of Lots	Site(s)
COMPLETED	026, 043	2	B.Dere/Gio in Gokana/Tai L.G.A and Aleto (Ngofa) in Eleme L.G.A respectively. Backfilling already started at Lot 043.
	022, 023, 024, 025, 031, 034, 029, 030	15	B.Dere/Gio in Gokana/Tai L.G.A Aabue Korokoro Flow Station in Tai L.G.A.

COMMENCED / ON-GOING	042		Korokoro Well 4 in Tai L.G.A.
	044		Aleto (Ngofa) in Eleme L.G.A.
	046		Nsioken, Akpajo in Eleme L.G.A
	056		New Elemenwa Manifold, Akpajo in Eleme L.G.A.
	047, 048,054		Okuluebu, Ogale in Eleme L.G.A.
YET COMMENCE TO	032, 033	12	B.Dere/Gio in Gokana/Tai L.G.A
	027, 028		Bara Alue in Tai L.G.A.
	045		Aleto (Ngofa) in Eleme L.G.A
	049, 050, 051, 052, 053, 055		Okuluebu, Ogale in Eleme L.G.A.
	057		New Elemenwa Manifold, Akpajo in Eleme L.G.A.
		29 Lots	



**Plate 6: Backfilling of excavated pits with treated soil in progress at Lot 026 (B. Dere / Gio Site in Tai L.G.A).
(Remediation Contractor= EarthQuest International Ltd).**



Plate 7: Commencement of excavation of impacted soil from delineated impacted area for treatment at Lot 029 (Aabue Korokoro Flow Station in Tai L.G.A). (*Remediation Contractor = Weafri Wells Services Ltd*).



Plate 8: Excavation work is yet to commence at Lot 055 (Okuluebu, Ogale, Eleme L.G.A) as Office Set-up is still at a lower level and Biocell construction is expected to be undertaken in the following weeks. (Remediation Contractor = ADG International Resources Ltd).

Detailed information on the Status of On-going Remediation Works under Phase 1, Batch 2 is summarized in Table 3 below:

S/N	LOT NR.	REMEDICATION CONTRACTOR	SITE NAME	L.G.A.	STATUS	PERFORMANCE PERCENTAGE (%)
1	022	Vitruvian Global Resources Ltd	B. Dere / Gio	Gokana / Tai.	Excavation and treatment of impacted soil.	35
2	023	Cascade Engineering Systems Ltd	B. Dere / Gio	Gokana / Tai.	Excavation and treatment of impacted soil.	50
3	024	Levene Energy Dev Ltd	B. Dere / Gio	Gokana / Tai.	Construction of engineered biocell at completion phase, excavation commenced.	30
4	025	Subadom Global Resources Ltd	B. Dere / Gio	Gokana / Tai.	Construction of engineered biocell at completion phase,	26

					excavation commenced.	
5	026	Earthquest Int'l Ltd	B. Dere / Gio	Gokana / Tai.	Excavation and treatment of impacted soil completed, backfilling at completion stage.	92
6	027	Marm Consulting Services Ltd	Bara Alue	Tai	Yet to establish physical presence on site.	2
7	028	Emamed Nig Ltd	Bara Alue	Tai	Construction of engineered biocell at completion phase, preparing to commence excavation.	19
8	029	Weafri Well Services Ltd	AABUE Korokoro Flow Station (FS)	Tai	Construction of engineered biocell at completion phase, excavation commenced.	30
9	030	Elizax Bleet Nig Ltd	AABUE Korokoro Flow Station (FS)	Tai	Excavation and treatment of impacted soil in progress.	60
10	031	Oilserv Ltd	B. Dere / Gio	Gokana / Tai.	Excavation and treatment of impacted soil in progress.	42
11	032	Mosito Environmental Ltd	B. Dere / Gio	Gokana / Tai.	Yet to establish physical presence on site.	2
12	033	Christohouston Energy Ltd	B. Dere / Gio	Gokana / Tai.	Biocell construction on-going.	22
13	034	DLK Oil & Gas Ltd	B. Dere / Gio	Gokana / Tai.	Excavation and treatment of impacted soil in progress.	43
14	042	Kanny Koy Ltd	Korokoro W-4	Tai.	Excavation and treatment of impacted soil completed, awaiting backfilling.	71
15	043	Otaoilf Services Ltd	Aleto Ngofa	Eleme	Excavation completed, treatment and backfilling in progress.	87
16	044	M/S Harrisco Int'l Ltd	Aleto Ngofa	Eleme	Excavation of impacted soil.	41

17	045	Chavyn Nig Ltd	Aleto Ngofa	Eleme	Completed biocell construction.	25
18	046	Andelsta Ltd	Nsioken Akpajo	Eleme	Construction of engineered biocell at completion phase, excavation commenced.	27
19	047	Lapideo Multi Services Ltd	Ajeokpori W-3 Okuluebu	Eleme	Excavation of impacted soil for treatment.	33
20	048	Slot Eng Nig Ltd	Ajeokpori W-3 Okuluebu	Eleme	Excavation of impacted soil for treatment on-going.	36
21	049	Environ Consult & Remedial Service Ltd	Ajeokpori W-3 Okuluebu	Eleme	Site office set-up, biocell construction.	17
22	050	Klartek Nig Ltd	Ajeokpori W-3 Okuluebu	Eleme	Setting up of site office.	13
23	051	Erotina Nig Ltd	Ajeokpori W-3 Okuluebu	Eleme	Setting up of site office and biocell construction at advance stages of completion.	19
24	052	Montego Upstream Services Ltd	Ajeokpori W-3 Okuluebu	Eleme	Setting up of site office and biocell construction at advance stages of completion.	16
25	053	Atlas- Ray & Sons Coy Ltd	Ajeokpori W-3 Okuluebu	Eleme	Completion of biocell construction.	19
26	054	Brant Technologies Ltd	Ajeokpori W-3 Okuluebu	Eleme	Completion of biocell construction, excavation of impacted soil in progress	39
27	055	ADG Int'l Resources Ltd	Ajeokpori W-3 Okuluebu	Eleme	Site office set-up.	6
28	056	Awa Engineering Coy Ltd	New Elemenwo Manifold, Akpajo	Eleme	Excavation and treatment of impacted soil at advance stage.	71
29	057	Integrated Chemical Works Ltd	New Elemenwo Manifold, Akpajo	Eleme	Site office set-up and biocell construction in progress.	13
SUMMARY OF PERFORMANCE RATINGS			Total Monthly Performance Score (TMPS) for April		986	
			Average Monthly Performance Score (AMPS) for April		34	
Performance Ratings from the previous Month (TMPS / AMPS)			826 / 28.48		Monthly Differences (present – previous) for TMPS & AMPS (- / +) +160 & +5.52	

	Percentage Monthly Difference (- / +) %	+19.38%
Comment(s) on Percentage Difference in Monthly Performance Ratings:- Relatively appreciable considering the magnitude of Contractors who have been awaiting Milestone Payments from HYPREP as at the time of this report, which condition is expected to improve from the subsequent week.		

